

# PERIMETER

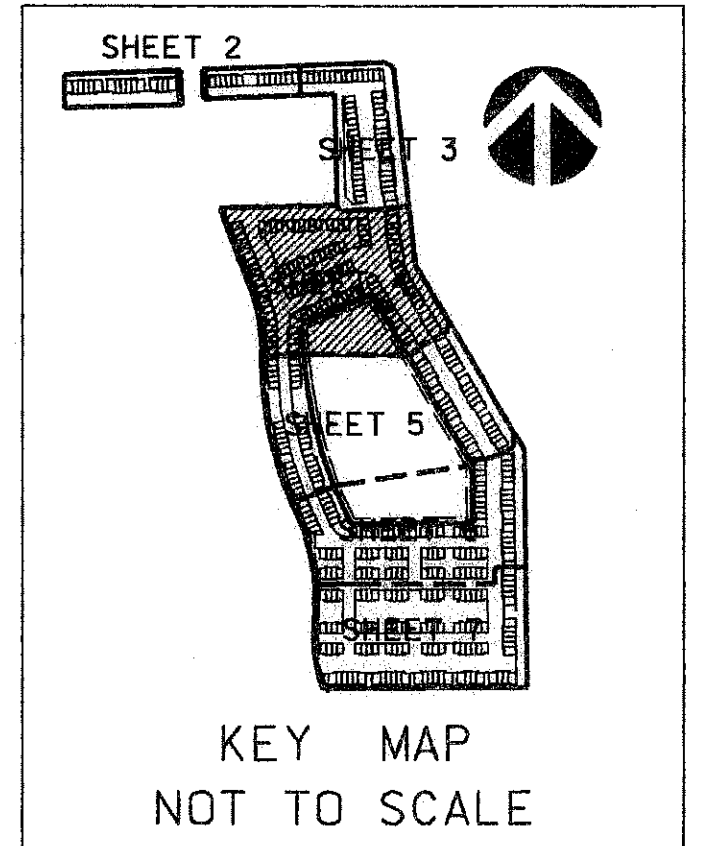
**SURVEYING & MAPPING**  
Prepared by: Jeff S. Hodapp, P.S.M.  
Certificate of Authorization No. LB7264  
951 Broken Sound Parkway, Suite 320  
Boca Raton, Florida 33487  
Tel: (561) 241-9888  
Fax: (561) 241-5182

# CORTINA PUD REPLAT

A REPLAT OF ALL OF "CORTINA PUD" (P.B. 108, PGS. 61-67, P.B.C.R.) IN SECTION 17,  
TOWNSHIP 45 SOUTH, RANGE 43 EAST, CITY OF BOYNTON BEACH,  
PALM BEACH COUNTY, FLORIDA. APRIL, 2007.

199

SHEET 4 OF 7



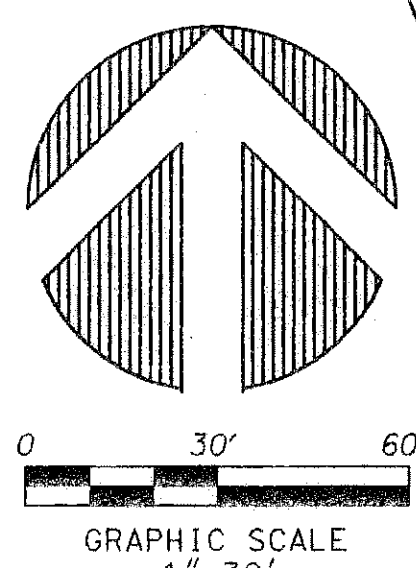
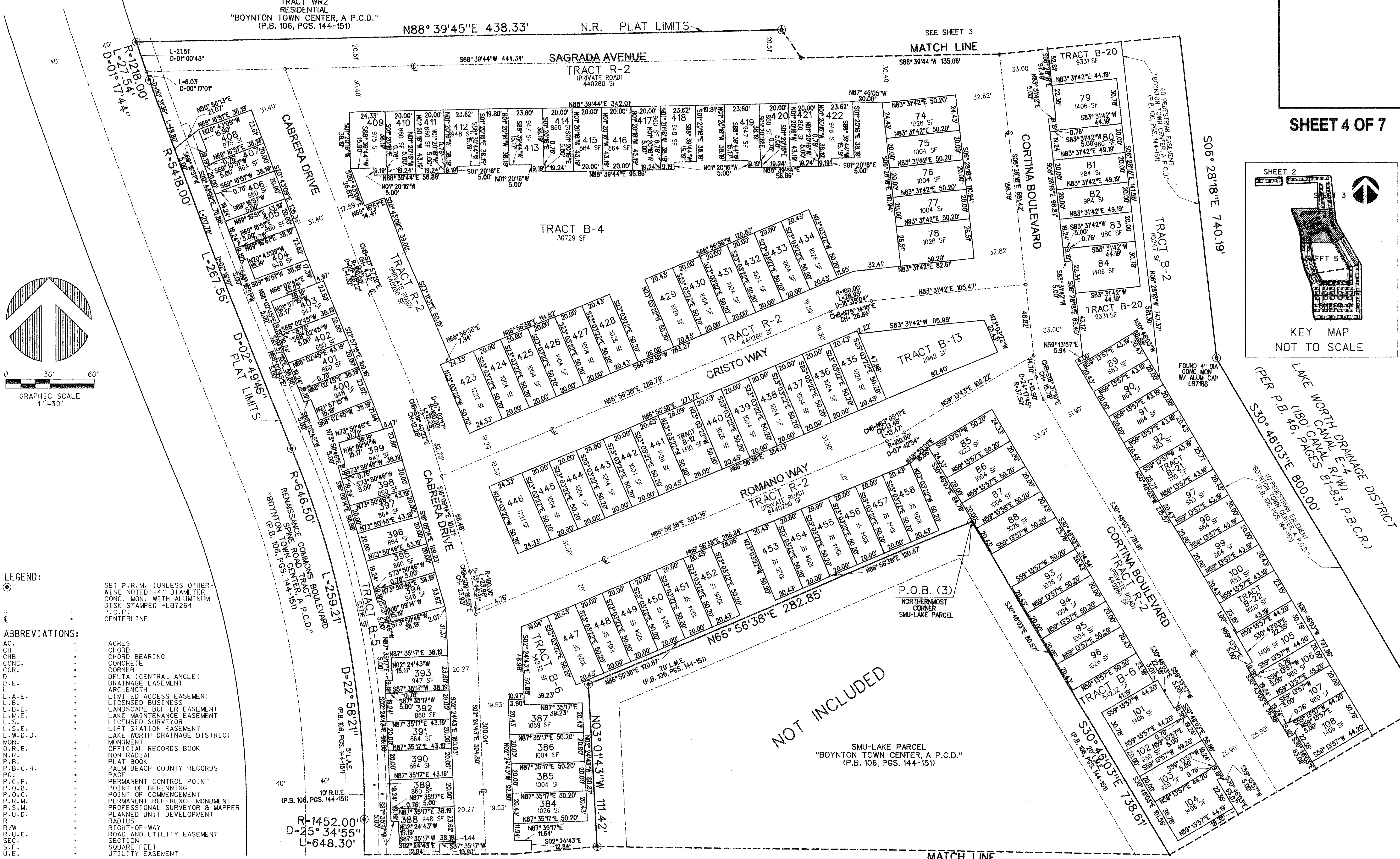
SMU-PARCEL 3  
TRACT WR2  
RESIDENTIAL  
"BOYNTON TOWN CENTER, A P.C.D."  
(P.B. 106, PGS. 144-151)

N88° 39'45"E 438.33'

N.R. PLAT LIMITS

SEE SHEET 3

MATCH LINE



**LEGEND:**

- SET P.R.M. (UNLESS OTHERWISE NOTED)-4" DIAMETER CONC. MON. WITH ALUMINUM DISK STAMPED -LB7264
- P.C.P. CENTERLINE

**ABBREVIATIONS:**

- AC. ACRES
- CH. CHORD
- CONC. CONCRETE
- COR. CORNER
- D. DELTA (CENTRAL ANGLE)
- D.E. DRAINAGE EASEMENT
- L.A.E. LIMITED ACCESS EASEMENT
- L.B. LICENSED BUSINESS
- L.B.E. LANDSCAPE BUFFER EASEMENT
- L.M.E. LAKE MAINTENANCE EASEMENT
- L.S. LICENSED SURVEYOR
- L.S.E. LIFT STATION EASEMENT
- L.W.D.D. LAKE WORTH DRAINAGE DISTRICT
- MON. MONUMENT
- O.R.B. OFFICIAL RECORDS BOOK
- N.R. NON-RADIAL
- P.B. PLAT BOOK
- P.B.C.R. PALM BEACH COUNTY RECORDS
- P.C.P. PERMANENT CONTROL POINT
- P.O.B. POINT OF BEGINNING
- P.O.C. POINT OF COMMENCEMENT
- P.R.M. PERMANENT REFERENCE MONUMENT
- P.S.M. PROFESSIONAL SURVEYOR & MAPPER
- P.U.D. PLANNED UNIT DEVELOPMENT
- R. RADIUS
- R.W. RIGHT-OF-WAY
- R.U.E. ROAD AND UTILITY EASEMENT
- S. SECTION
- S.F. SQUARE FEET
- U.E. UTILITY EASEMENT

NOT INCLUDED

SMU-LAKE PARCEL  
"BOYNTON TOWN CENTER, A P.C.D."  
(P.B. 106, PGS. 144-151)

MATCH LINE  
SEE SHEET 5

LAKE WORTH DRAINAGE DISTRICT  
(PER P.B. 46, PAGES 81-83, P.B.C.R.)  
S30° 46'03"E 800.00'

S06° 28'18"E 740.19'

TRACT B-2  
9331 SF

TRACT B-20  
9331 SF

TRACT B-20  
9331 SF

TRACT B-13  
2942 SF

TRACT B-4  
30729 SF

TRACT B-2  
440280 SF

TRACT B-5  
30729 SF

TRACT B-6  
30729 SF

TRACT B-2  
440280 SF